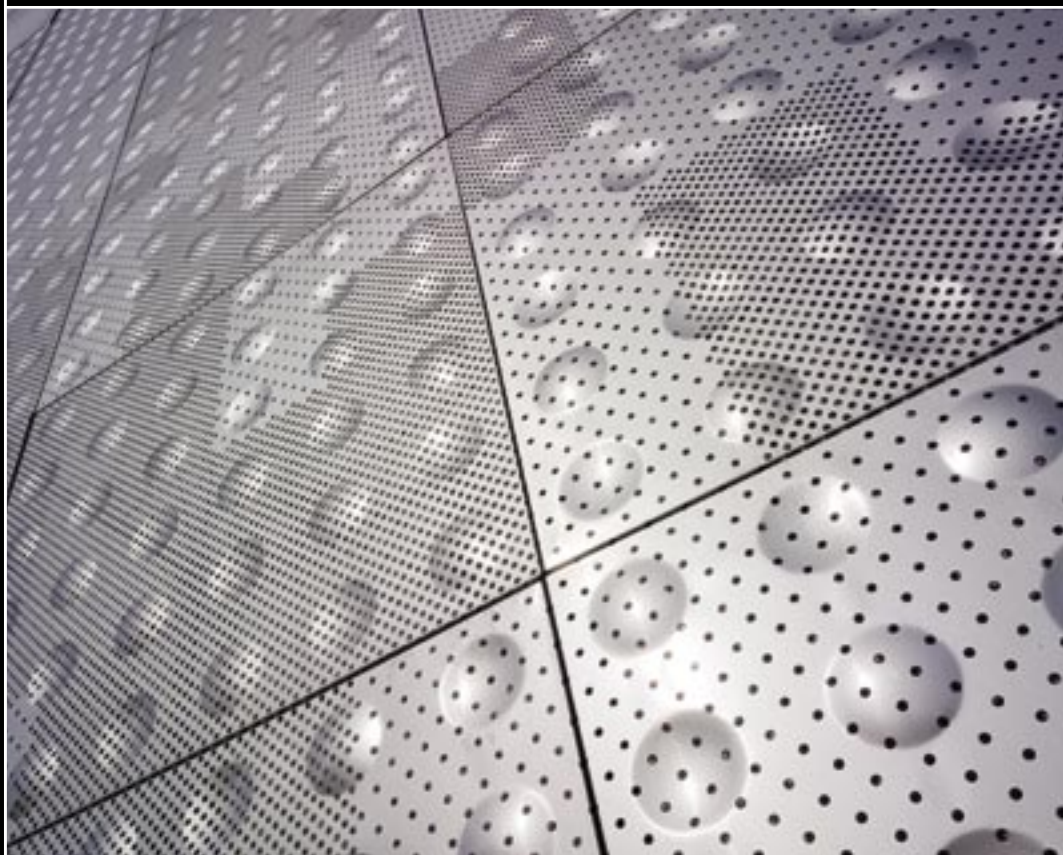




## CASE STUDY: LE RUBAN BLEU, FRANCE

PROJECT:	Le Ruban Bleu Commercial Centre
MATERIAL:	Embossed, indented and perforated stainless steel (cladding) and perforated aluminium (ceiling panels)
APPLICATION:	Architectural cladding and decorative ceiling panels
LOCATION:	St. Nazaire, France

St. Nazaire's nautical heritage was the inspiration behind the complex patterns on 1,300m<sup>2</sup> of decorative cladding and ceiling panels manufactured by RMIG for the Ruban Bleu retail centre.



## PROJECT OVERVIEW

Covering an area of 18,000m<sup>2</sup>, the Ruban Bleu commercial and retail centre is a key part of St. Nazaire's ongoing regeneration and development programme and acts as the main thoroughfare, linking the city centre to the beach and harbour, encouraging residents to re-discover the historic port area.

Architects Reichen & Robert Associates originally approached RMIG in late 2006 as they sought a manufacturer capable of producing their designs and to work alongside them in developing and finalising the original concepts into a striking exterior finish, incorporating almost 1,400 individual cladding and ceiling panels.

## DESIGN & CONSTRUCTION

As the building is just 200 metres from the Atlantic Ocean, the architects chose to use 1.0mm thick salt-water resistant stainless steel cladding, incorporating a series of complex domed, indented and perforated patterns to represent waves and sea-spray. A similar approach was adopted on the centre's ceiling panels, where the 1.5mm thick aluminium includes a marine map produced from thousands of small perforations.

On previous architectural projects, RMIG had developed rapid precision manufacturing techniques both for perforated panels and for applying convex and concave forms into cladding, but the designs for Le Ruban Bleu incorporated both principles in virtually every panel. Also, some panel designs called for the domed and indented forms to be perforated, which presented an additional challenge as there was no existing solution available.





## THE RMIG SOLUTION

To meet the unique architectural, aesthetic and functional specifications required for the project, RMIG developed special tooling in France and ran a series of trials to fine-tune the process.

The success of the development trials ensured that the complex pattern of domes, concave shapes and perforations could be produced with high precision and repeatability to the demanding specifications. Within three months, every panel was complete and delivered to site for installation.



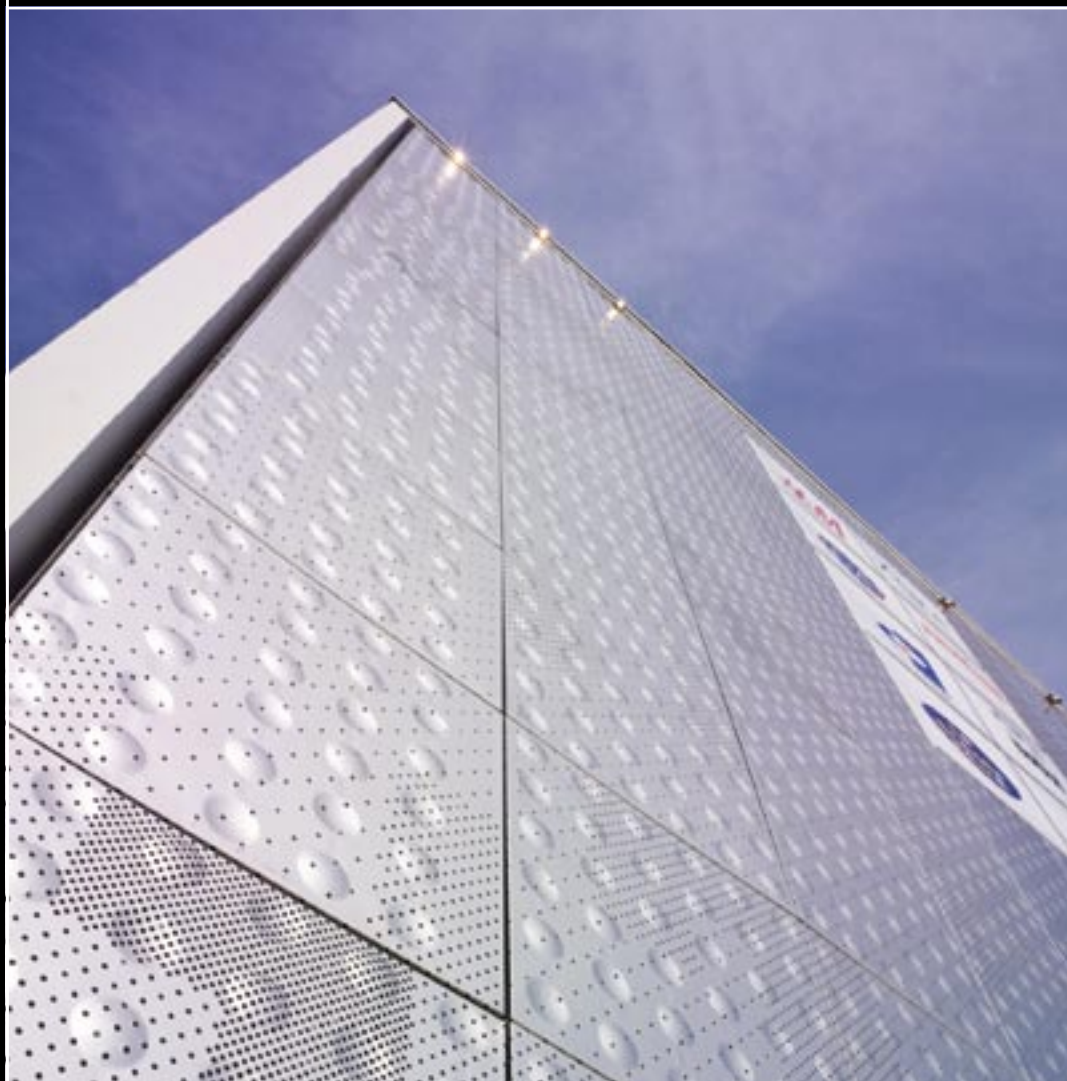


## THE RMIG GROUP

# RMIG

RMIG is the world's largest manufacturer and supplier of perforated metal. In addition to exterior cladding, the company also supplies products for a large number of construction applications such as car park and security screening, acoustic wall linings, ceilings, lighting, street furniture, balustrades, walkways and a range of other uses.

Further information on the RMIG Group, its products and manufacturing solutions together with the markets served can be obtained by visiting [www.rmig.com](http://www.rmig.com)



[www.rmig.com](http://www.rmig.com)